

ALLEGATO C

RILIEVI BATIMETRICI SINGLE BEAM E MULTI BEAM

L'allegato contiene:

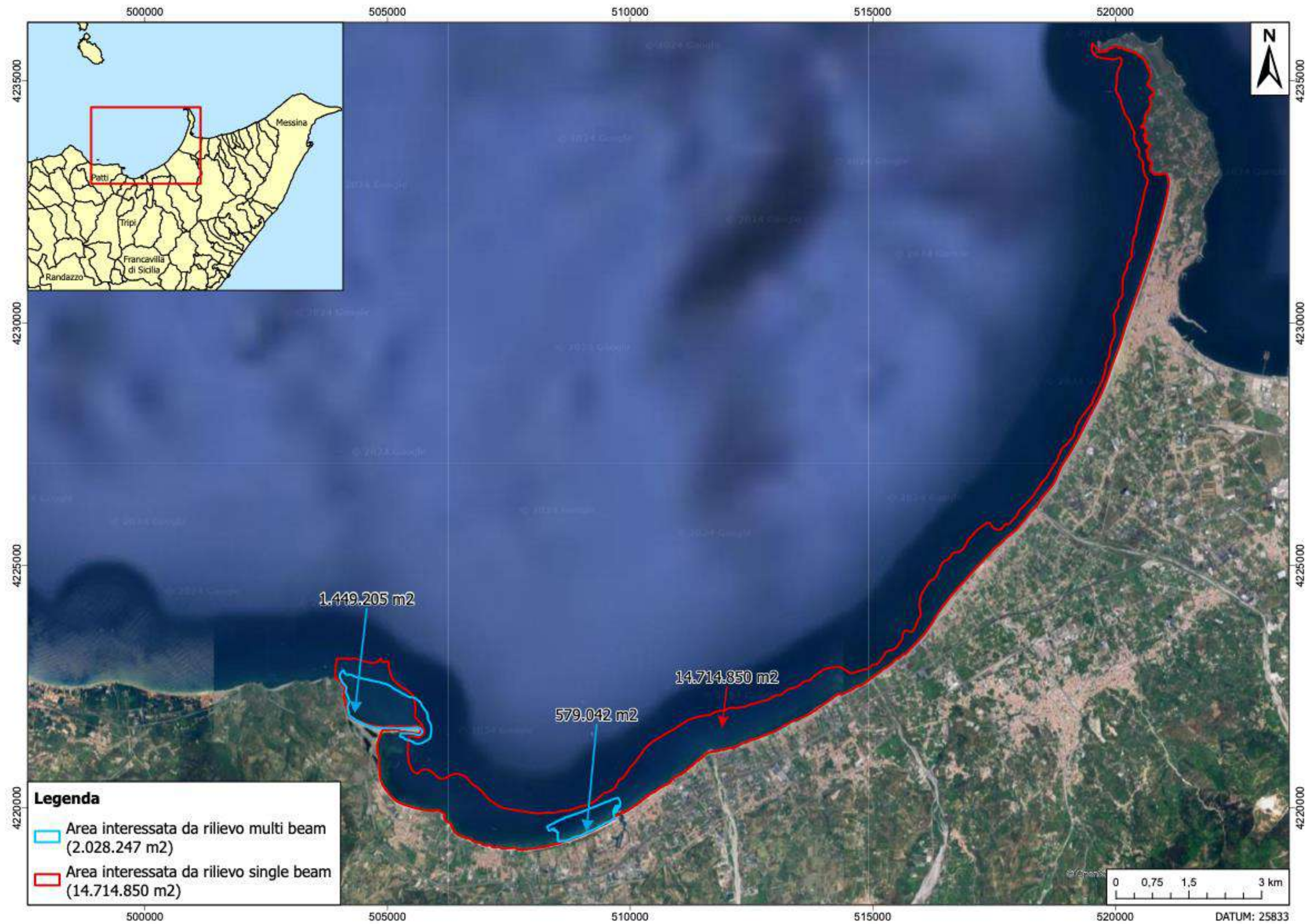
Quadro d'insieme dei rilievi eseguiti nel Golfo di Patti

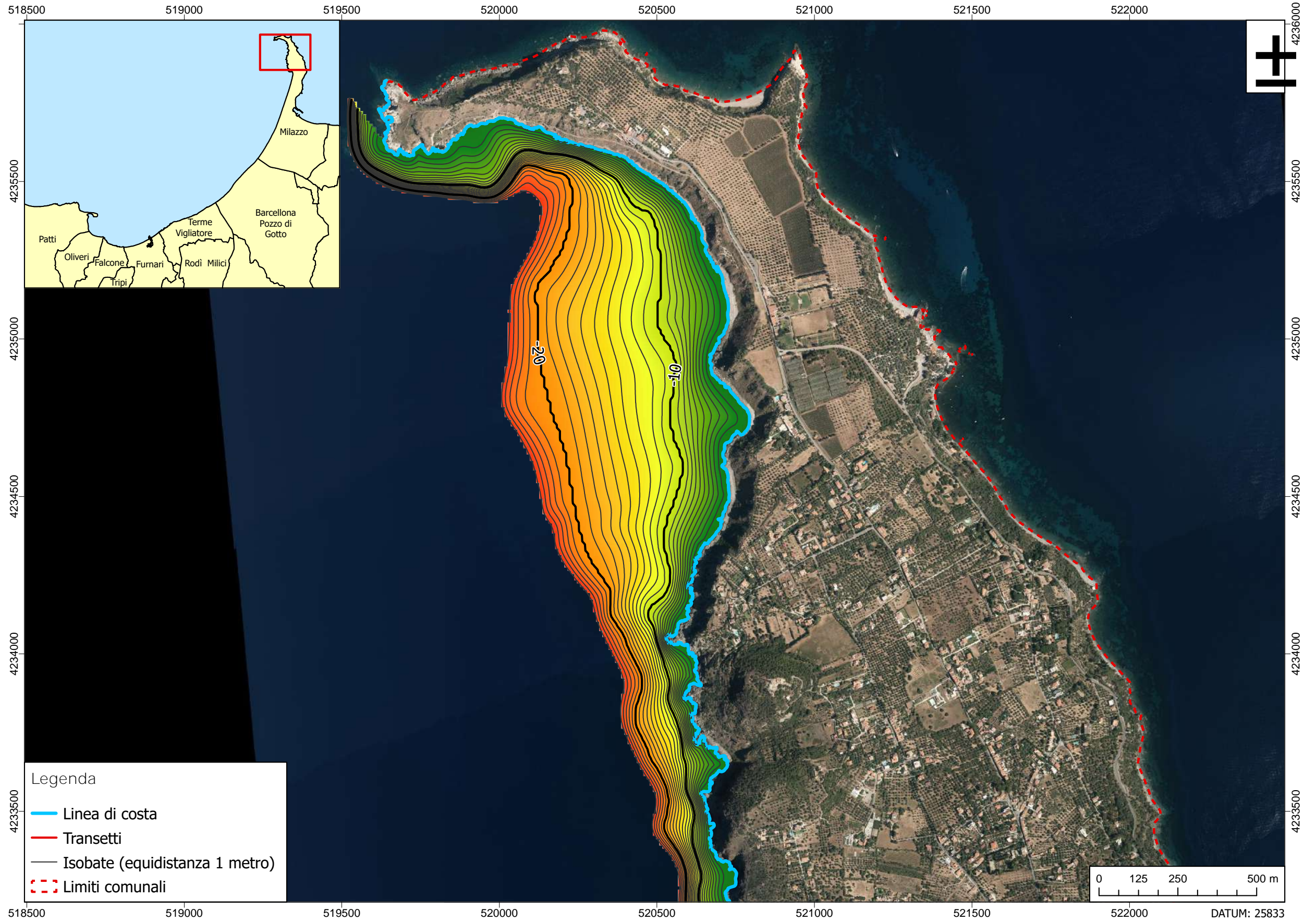
Rilievo batimetrico single beam condotto lungo 43 transetti ortogonali alla riva e diviso in 10 tavole coincidenti con i territori comunali (circa): superficie complessiva 14,7 kmq

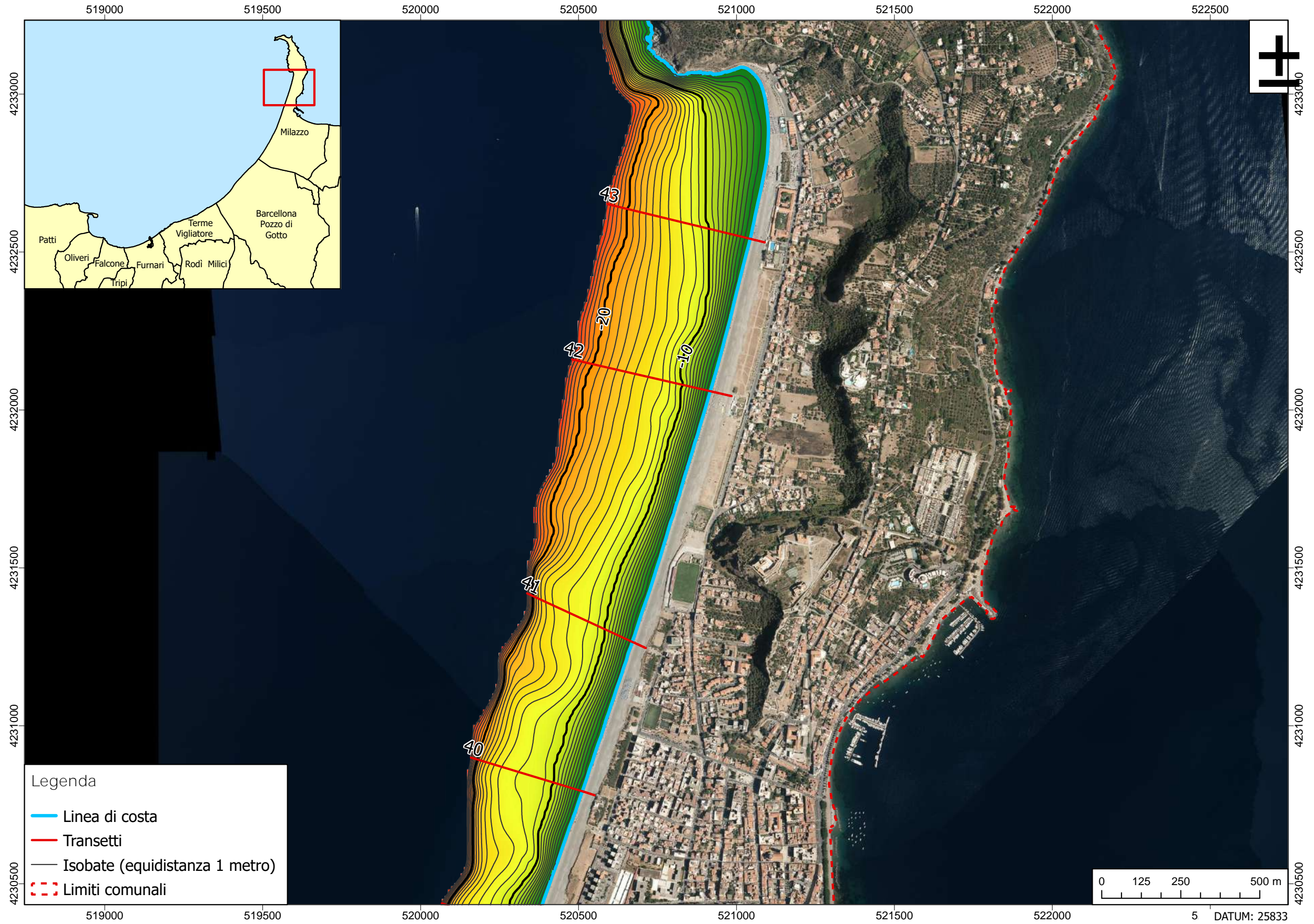
Rilievo multi beam dell'area di Furnari – Porto Rosa: superficie complessiva 0,58 kmq

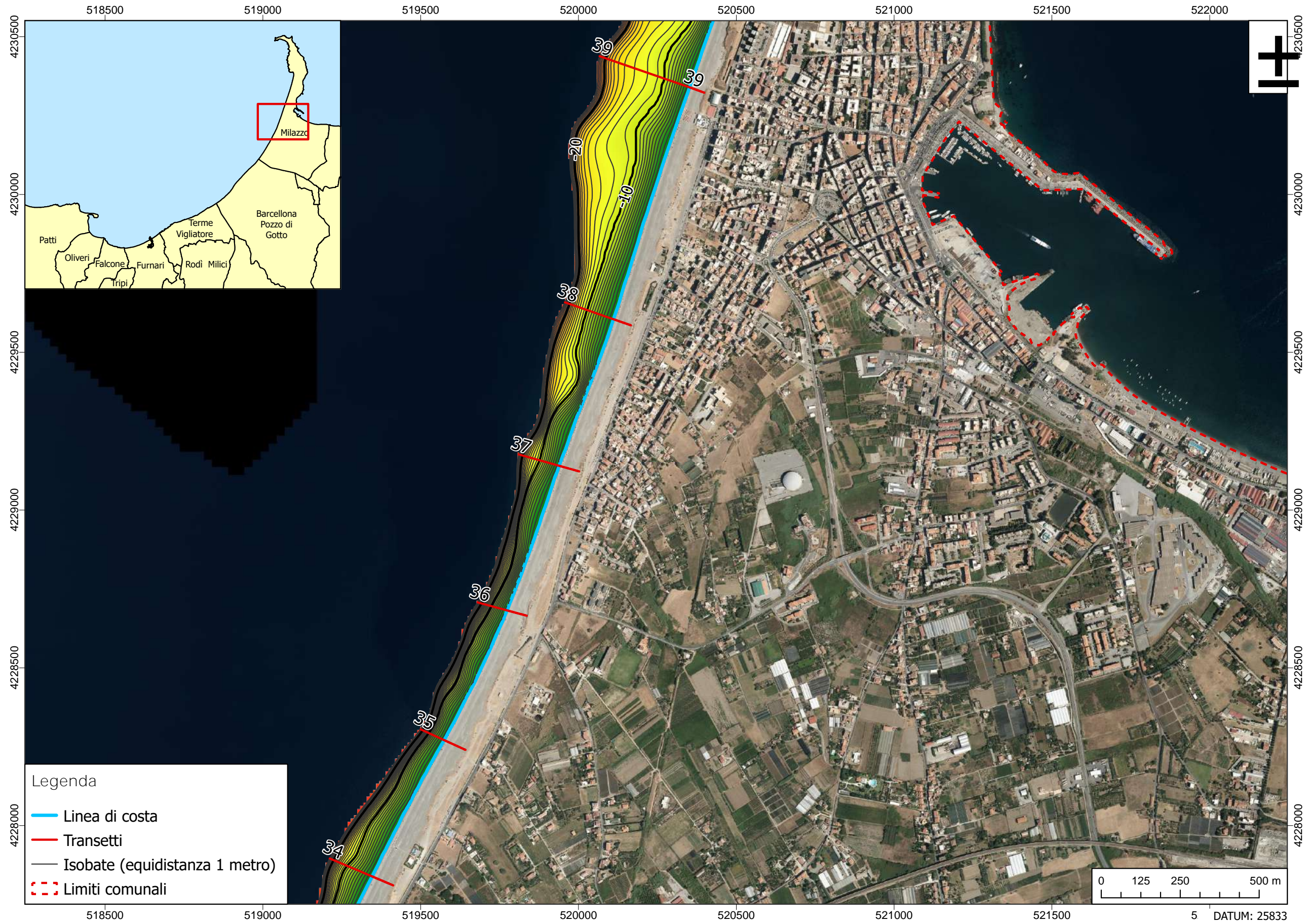
Rilievo multi beam dell'area di Tindari: superficie complessiva 1,45 kmq

Rilievo single beam dell'area di Ramla: superficie complessiva 0,38 kmq













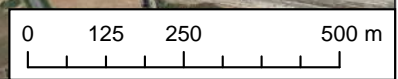
Legenda

 Linea di costa

 Transetti

 Isobate (equidistanza 1 metro)

 Limiti comunali



DATUM: 25833

